



# District® Youth Perfect Tri® Long Sleeve Hoodie DT139Y



A lightweight tri-blend essential that's perfect all year round.

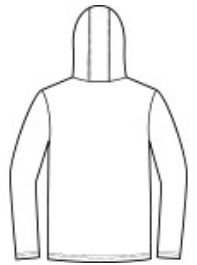
- 4.5-ounce, 50/25/25 poly/combed ring spun cotton/rayon, 32 singles
- Tear-away label
- Shoulder to shoulder taping

### CARE INSTRUCTIONS

Machine wash cold with like colors. Non-chlorine bleach when needed. Tumble dry low. Cool iron if necessary.



front



back

### HOW TO MEASURE



#### CHEST WIDTH

Measure under the arm and around the fullest part of the chest with arms down, keeping tape horizontal.

### SIZE CHART

	XS	S	M	L	XL
Size	4/5	6/8	10/12	14/16	18/20
Chest	22-24	25-27	28-30	30-32	32-34

### COLOR INFORMATION



Black Frost  
PMS 426C



Deep Royal  
PMS 288C



Grey Frost  
PMS COOL GREY  
10C



Navy Frost  
PMS 2379C